



D E S C R I P T I O N

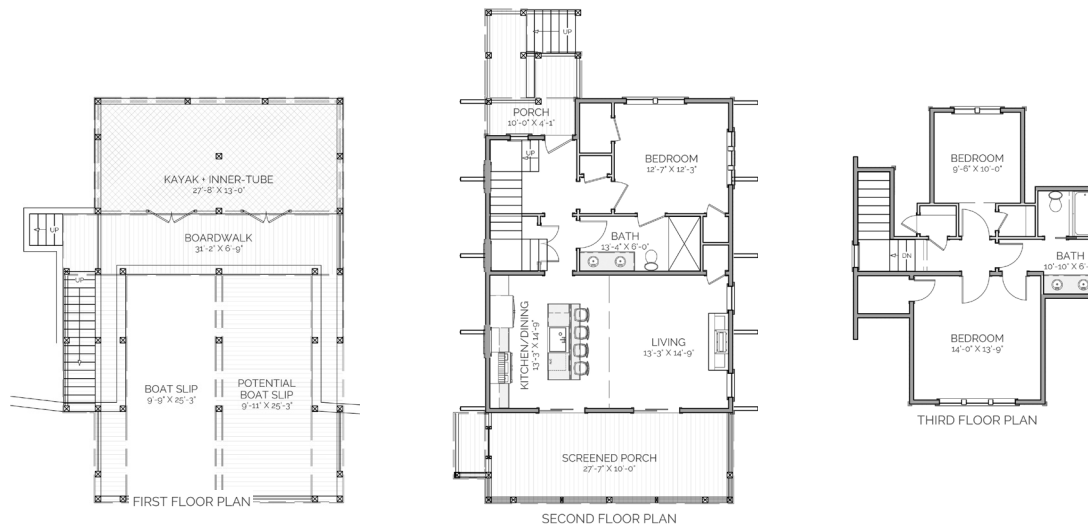
WHILE THE CARY BOATHOUSE IS EFFICIENT WITH ITS 2 1/2 STORY LAYOUT, IT STILL HAS ROOM TO GROW. THE POTENTIAL BOAT SLIP AREA IS A GREAT USE OF SPACE UNTIL YOU GET THAT SECOND BOAT! AND THE ELEVATED SCREENED PORCH IS A GREAT PLACE FOR A COOL, BUG-FREE BREEZE--AND LET'S NOT FORGET ABOUT THE VIEW! THE FIRST FLOOR HAS PLENTY OF STORAGE, SO PACK UP AND BUILD THIS THING!

A R E A C A L C U L A T I O N S

- FIRST FLOOR CONDITIONED
0 SQ FT
- SECOND FLOOR CONDITIONED
914 SQ FT
- THIRD FLOOR CONDITIONED
547 SQ FT
- TOTAL CONDITIONED
1461 SQ FT
- FIRST FLOOR UNDER ROOF
1226 SQ FT
- SECOND FLOOR UNDER ROOF
1229 SQ FT
- THIRD FLOOR UNDER ROOF
547 SQ FT
- TOTAL UNDER ROOF
3002 SQ FT

H I G H L I G H T S

- 2 1/2 STORY ▪ SINGLE-FAMILY
- EFFICIENT ▪ SCREEN PORCH SPACE
- 1 BOAT SLIP ▪ 2 BATHROOM
- POTENTIAL SLIP ▪ 3 BEDROOM



CARY
BOATHOUSE

THIS IS PROPERTY OF LAKE + LAND STUDIO, LLC. THIS IS NOT A CONSTRUCTION DOCUMENT AND MAY NOT BE USED OR REPRODUCED WITHOUT THE PERMISSION OF LAKE + LAND STUDIO, LLC.

LAKE + LAND STUDIO, LLC

HATTIESBURG, MS 39402
601.336.8114
WWW.LAKEANDLANDSTUDIO.COM