



D E S C R I P T I O N

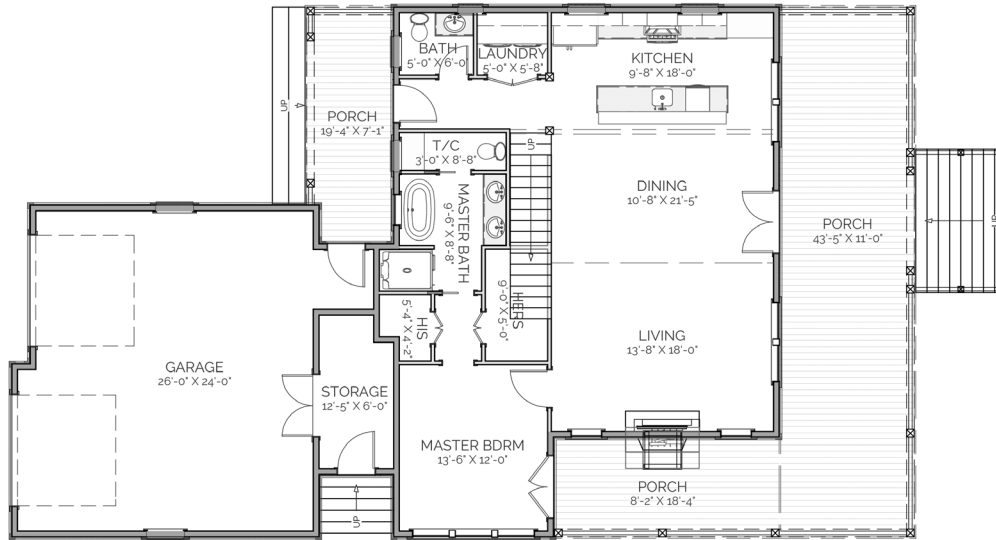
WITH LESS THAN 2,000 CONDITIONED SQUARE FEET, THIS PLAN HOST AN OPEN CONCEPT KITCHEN/ DINING/ LIVING, 3 GRACIOUS BEDROOMS, AND LOTS OF STORAGE. THE EXPANSIVE LIVING/ DINING ROOM, WITH FIREPLACE, OPEN TO A SPACIOUS FRONT PORCH THAT WRAPS AROUND FOR EASY ACCESS TO THE OUTDOORS. THE PRIVATE BACK PORCH CAN ALSO BE EASILY ACCESSED FROM THE 2 CAR GARAGE AND THE KITCHEN.

A R E A C A L C U L A T I O N S

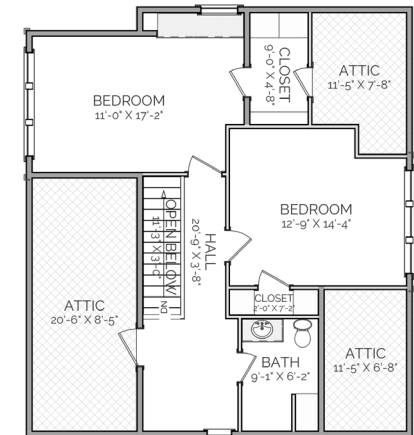
- FIRST FLOOR CONDITIONED
1,217 SQ FT
- SECOND FLOOR CONDITIONED
677 SQ FT
- TOTAL CONDITIONED
1,894 SQ FT
- FIRST FLOOR UNDER ROOF
2,732 SQ FT
- SECOND FLOOR UNDER ROOF
677 SQ FT
- TOTAL UNDER ROOF
3,409 SQ FT

H I G H L I G H T S

- LARGE COVERED PORCH
- EFFICIENT
- FIREPLACE
- 3 BEDROOMS
- 2 CAR GARAGE
- STORAGE
- 2 1/2 BATH



FIRST FLOOR PLAN



SECOND FLOOR PLAN

MERIDIAN RESIDENCE

THIS IS PROPERTY OF LAKE + LAND STUDIO, LLC. THIS IS NOT A CONSTRUCTION DOCUMENT AND MAY NOT BE USED OR REPRODUCED WITHOUT THE PERMISSION OF LAKE + LAND STUDIO, LLC.

LAKE + LAND STUDIO, LLC
 HATTIESBURG, MS 39402
 601.336.8114
 WWW.LAKEANDLANDSTUDIO.COM