



**D E S C R I P T I O N**

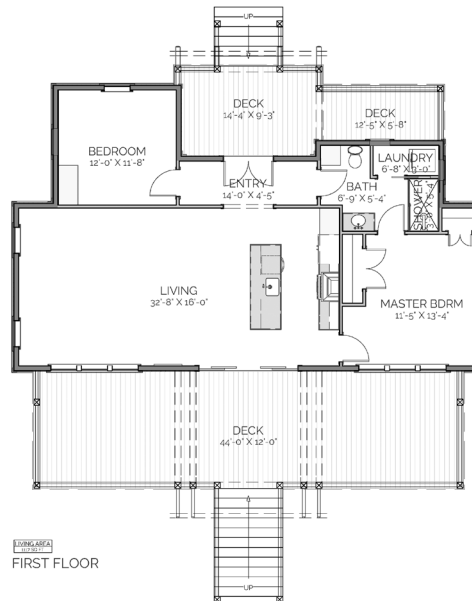
THE PICKENS RETREAT IS A SWEET, EFFICIENT COTTAGE IDEAL FOR EMPTY NESTERS OR FOR A WEEKEND GET-A-WAY. THE OPEN CONCEPT FAMILY, DINING, AND KITCHEN OPEN TO A LARGE COVERED BACK PORCH. THE SECONDARY BEDROOM IS A GREAT SIZE FOR A BUNK ROOM. THE BATHROOM, WITH LAUNDRY CLOSET, IS EASILY ACCESSED FROM THE ENTRY HALL OR MASTER BEDROOM.

**A R E A C A L C U L A T I O N S**

- FIRST FLOOR CONDITIONED  
1,117 SQ FT
- TOTAL CONDITIONED  
1,117 SQ FT
- FIRST FLOOR UNDER ROOF  
1,962 SQ FT
- TOTAL UNDER ROOF  
1,962 SQ FT

**H I G H L I G H T S**

- LARGE COVERED PORCH
- EFFICIENT    ▪ FRONT PORCH
- KITCHEN ISLAND    ▪ OPEN CONCEPT
- 2 BEDROOMS    ▪ 1 BATH



# PICKENS RETREAT

THIS IS PROPERTY OF LAKE + LAND STUDIO, LLC. THIS IS NOT A CONSTRUCTION DOCUMENT AND MAY NOT BE USED OR REPRODUCED WITHOUT THE PERMISSION OF LAKE + LAND STUDIO, LLC.

**LAKE + LAND STUDIO, LLC**

HATTIESBURG, MS 39402

601.336.8114

WWW.LAKEANDLANDSTUDIO.COM