



DESCRIPTION

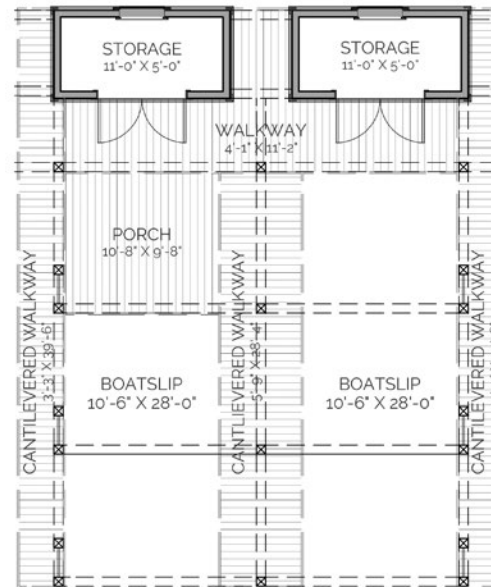
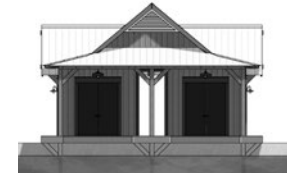
RELAXING IS EASY IN THE IMPRESSIVE, GENEROUSLY SPACIOUS WOODVILLE BOATHOUSE. WITH 2 BOATSLIPS AND 2 STORAGE ROOMS, THIS BOATHOUSE IS COMPLETELY READY FOR GUESTS TO ENJOY THE FUN OF BEING ON THE WATER WITH VERY LOW EFFORT. WITH ITS WIDE WALKWAYS, THIS BOATHOUSE IS IDEALLY DESIGNED TO ENJOY SUMMERS ON THE WATER WITH EASY ACCESS TO YOUR BOAT AND BOATING GEAR!

AREA CALCULATIONS

FIRST FLOOR CONDITIONED
0 SQ FT
TOTAL CONDITIONED
0 SQ FT
FIRST FLOOR UNDER ROOF
1,295 SQ FT
TOTAL UNDER ROOF
1,295 SQ FT

HIGHLIGHTS

- LARGE COVERED PORCH
- EFFICIENT
- 2 STORAGE ROOMS
- 2 BOAT SLIPS
- WIDE WALKWAYS



WOODVILLE

BOATHOUSE

THIS IS PROPERTY OF LAKE + LAND STUDIO, LLC. THIS IS NOT A CONSTRUCTION DOCUMENT AND MAY NOT BE USED OR REPRODUCED WITHOUT THE PERMISSION OF LAKE + LAND STUDIO, LLC.

LAKE + LAND STUDIO, LLC

15 KEYSTONE DRIVE, SUITE A
HATTIESBURG, MS 39402
601.336.8114
WWW.LAKEANDLANDSTUDIO.COM