



DESCRIPTION

SOMETIMES A DAY AT THE LAKE CALLS FOR AN IDEAL BOATHOUSE. WITH ITS STORAGE, HALF BATH ACCESS, AND UPPER DECK LEVEL, IT IS PERFECT FOR A DAY OUT WITH FAMILY AND FRIENDS. ACCOMPANIED WITH TWO SLIPS FOR A BOAT AND TWO JET SKIS, THE FUN IS LIMITLESS! BUT DON'T WORRY, THERE IS A FISHING DOCK FOR THOSE ANGLERS, TOO.

AREA CALCULATIONS

FIRST FLOOR CONDITIONED

26 SQ FT

SECOND FLOOR CONDITIONED

0 SQ FT

TOTAL CONDITIONED

26 SQ FT

FIRST FLOOR UNDER ROOF

854 SQ FT

SECOND FLOOR UNDER ROOF

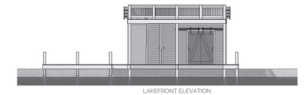
0 SQ FT

TOTAL UNDER ROOF

854 SQ FT

HIGHLIGHTS

- ONE BOAT SLIP ▪ FISHING DOCK
- TWO JET SKI SLIP ▪ 0.5 BATHROOM
- UPPER DECK LEVEL ▪ STORAGE



FIRST FLOOR PLAN



SECOND FLOOR PLAN

SOUTHAVEN BOATHOUSE

THIS IS PROPERTY OF LAKE + LAND STUDIO, LLC. THIS IS NOT A CONSTRUCTION DOCUMENT AND MAY NOT BE USED OR REPRODUCED WITHOUT THE PERMISSION OF LAKE + LAND STUDIO, LLC.

LAKE + LAND STUDIO, LLC

15 KEYSTONE DRIVE, SUITE A
HATTIESBURG, MS 39402
601.336.8114

WWW.LAKEANDLANDSTUDIO.COM