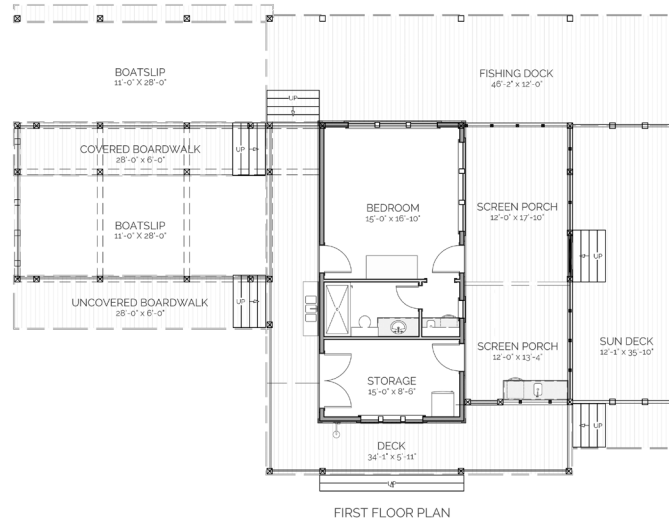




**D E S C R I P T I O N**

THE SUMMIT BOATHOUSE HAS MUCH TO OFFER WITH ITS EXTERIOR AND INTERIOR LAYOUTS. DECKS, PORCHES, AND BOATSLIPS SURROUND THE CONDITIONED SPACE: BEDROOM, STORAGE, A FULL BATH, AND A KITCHENETTE. LET'S JUST SAY IF YOU REALLY HAD TO STAY HERE OVER NIGHT, YOU WOULD NOT BE DISAPPOINTED WITH ALL IT HAS TO OFFER.



**A R E A C A L C U L A T I O N S**

- FIRST FLOOR CONDITIONED  
734 SQ FT
- TOTAL CONDITIONED  
2657 SQ FT
- FIRST FLOOR UNDER ROOF  
1873. SQ FT
- TOTAL UNDER ROOF  
4381 SQ FT

**H I G H L I G H T S**

- SUN DECK ▪ SINGLE-FAMILY
- TWO BOAT SLIP ▪ 1 BEDROOM
- PORCH ▪ DECK ▪ 1 BATHROOM
- FISHING DOCK ▪ EFFICIENT

SUMMIT  
BOATHOUSE

THIS IS PROPERTY OF LAKE + LAND STUDIO, LLC. THIS IS NOT A CONSTRUCTION DOCUMENT AND MAY NOT BE USED OR REPRODUCED WITHOUT THE PERMISSION OF LAKE + LAND STUDIO, LLC.

**LAKE + LAND STUDIO, LLC**  
15 KEYSTONE DRIVE, SUITE A  
HATTIESBURG, MS 39402  
601.336.8114  
WWW.LAKEANDLANDSTUDIO.COM