



D E S C R I P T I O N

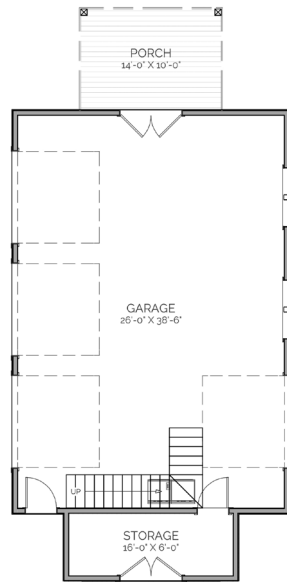
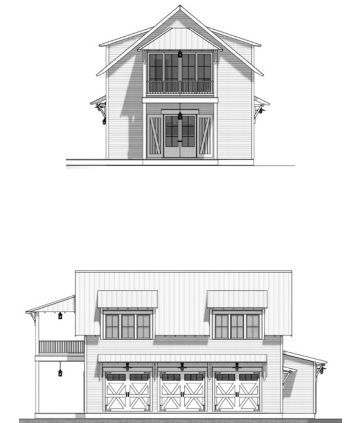
THIS HOUSE WOULD BE A GREAT ADDITION TO ANY HOME! THE TYLERTOWN CARRIAGE HOUSE IS UNIQUELY DESIGNED TO PARK 3 VEHICLES IN THE GARAGE WITH A 2 BEDROOM/1 BATH GARAGE SUITE. THE OPEN FLOOR PLAN OF THE SUITE ALLOWS RESIDENTS TO HAVE PLENTY OF VIEWS TO THE SURROUNDING LANDSCAPE. THE OPENNESS OF THE FLOOR PLAN ALSO MAKES IT VERY VERSITILE WITH ARRANGING FURNITURE.

A R E A C A L C U L A T I O N S

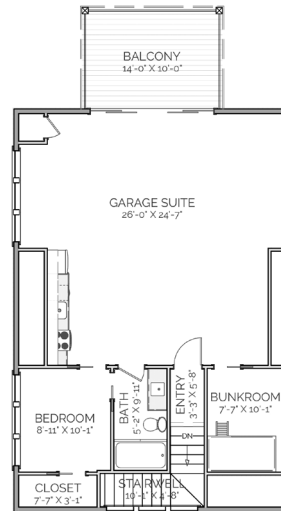
- GARAGE FLOOR CONDITIONED
0 SQ FT
- FIRST FLOOR CONDITIONED
908 SQ FT
- LOFT FLOOR CONDITIONED
101 SQ FT
- TOTAL CONDITIONED
1,009 SQ FT
- GARAGE FLOOR UNDER ROOF
1,315 SQ FT
- FIRST FLOOR UNDER ROOF
1,045 SQ FT
- LOFT FLOOR UNDER ROOF
101 SQ FT
- TOTAL UNDER ROOF
2,461 SQ FT

H I G H L I G H T S

- LARGE 3 CAR GARAGE
- OUTDOOR STORAGE ROOM
- UPSTAIR APARTMENT ▪ BALCONY
- 2 BEDROOM ▪ 1 BATH ▪ KITCHENETTE



FIRST FLOOR PLAN



SECOND FLOOR PLAN



TYLERTOWN

CARRIAGE HOUSE

THIS IS PROPERTY OF LAKE + LAND STUDIO, LLC. THIS IS NOT A CONSTRUCTION DOCUMENT AND MAY NOT BE USED OR REPRODUCED WITHOUT THE PERMISSION OF LAKE + LAND STUDIO, LLC.

LAKE + LAND STUDIO, LLC

HATTIESBURG, MS 39402

601.336.8114

WWW.LAKEANDLANDSTUDIO.COM