



D E S C R I P T I O N

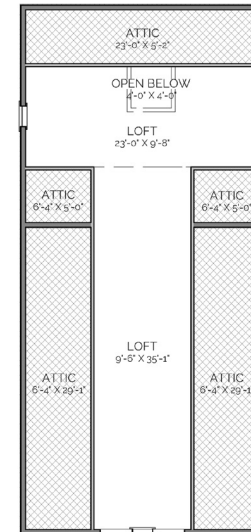
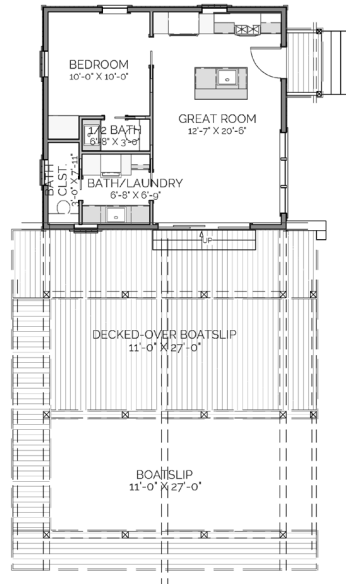
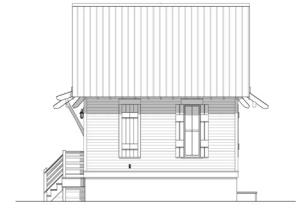
THE WEST POINT BOATHOUSE IS PERFECT FOR A WEEKEND GETAWAY. WITH ONE BOAT SLIP, AN EXPANDABLE DECK FOR POSSIBLE FUTURE BOATS, A COMFORTABLE LIVING SPACE WITH KITCHENETTE, ONE CAN EASILY TRANSITION FROM CATCHING THE LIMIT TO RELAXING AND WATCHING THE SUNSET. A LONG LOFT ABOVE IS PERFECT FOR EXTRA STORAGE OR EVEN JUST A HIDEOUT FOR THE KIDS.

A R E A C A L C U L A T I O N S

- FIRST FLOOR CONDITIONED
516 SQ FT
- SECOND FLOOR CONDITIONED
588 SQ FT
- TOTAL CONDITIONED
1,104 SQ FT
- FIRST FLOOR UNDER ROOF
1,211 SQ FT
- SECOND FLOOR UNDER ROOF
588 SQ FT
- TOTAL UNDER ROOF
1,799 SQ FT

H I G H L I G H T S

- TWO STORY
- TWO 1/2 BATH
- LOFT SPACE
- GREAT ROOM
- BEDROOM
- KITCHENETTE
- BOAT SLIP W/ FUTURE EXPANSION



WEST POINT BOATHOUSE

OVERALL DIMENSIONS:
24' WIDE X 54' 4-1/2" DEEP

THIS IS PROPERTY OF LAKE + LAND STUDIO, LLC. THIS IS NOT A CONSTRUCTION DOCUMENT AND MAY NOT BE USED OR REPRODUCED WITHOUT THE PERMISSION OF LAKE + LAND STUDIO, LLC.

LAKE + LAND STUDIO, LLC

16 BELLEGRASS BLVD
HATTIESBURG, MS 39402
601.336.8114
WWW.LAKEANDLANDSTUDIO.COM