

DESCRIPTION

THE WILLOW POINT RESIDENCE, A TWO STORY TRADITIONAL HOME, SEAMLESSLY COMBINING ELEGANCE AND FUNCTIONALITY. BOASTING 4 BEDROOMS AND 4 BATHROOMS, THE OPEN CONCEPT LIVING AND KITCHEN SPACE CREATE AN INVITING ATMOSPHERE FOR BOTH RELAXATION AND ENTERTAINMENT. THE BUTLER'S PANTRY, LARGE LAUNDRY ROOM, AND OFFICE CONTRIBUTE TO THE FUNCTIONALITY, AS WELL AS, THE LOFT LIVING SPACE, LIBRARY/HOMEWORK HALL, AND THE SEPERATE BONUS SPACE ON THE SECOND FLOOR. THE LARGE BACK PORCH, COUPLED WITH THE DEDICATED DINING PORCH, EXTENDS THE LIVING SPACE OUTDOORS.

AREA CALCULATIONS

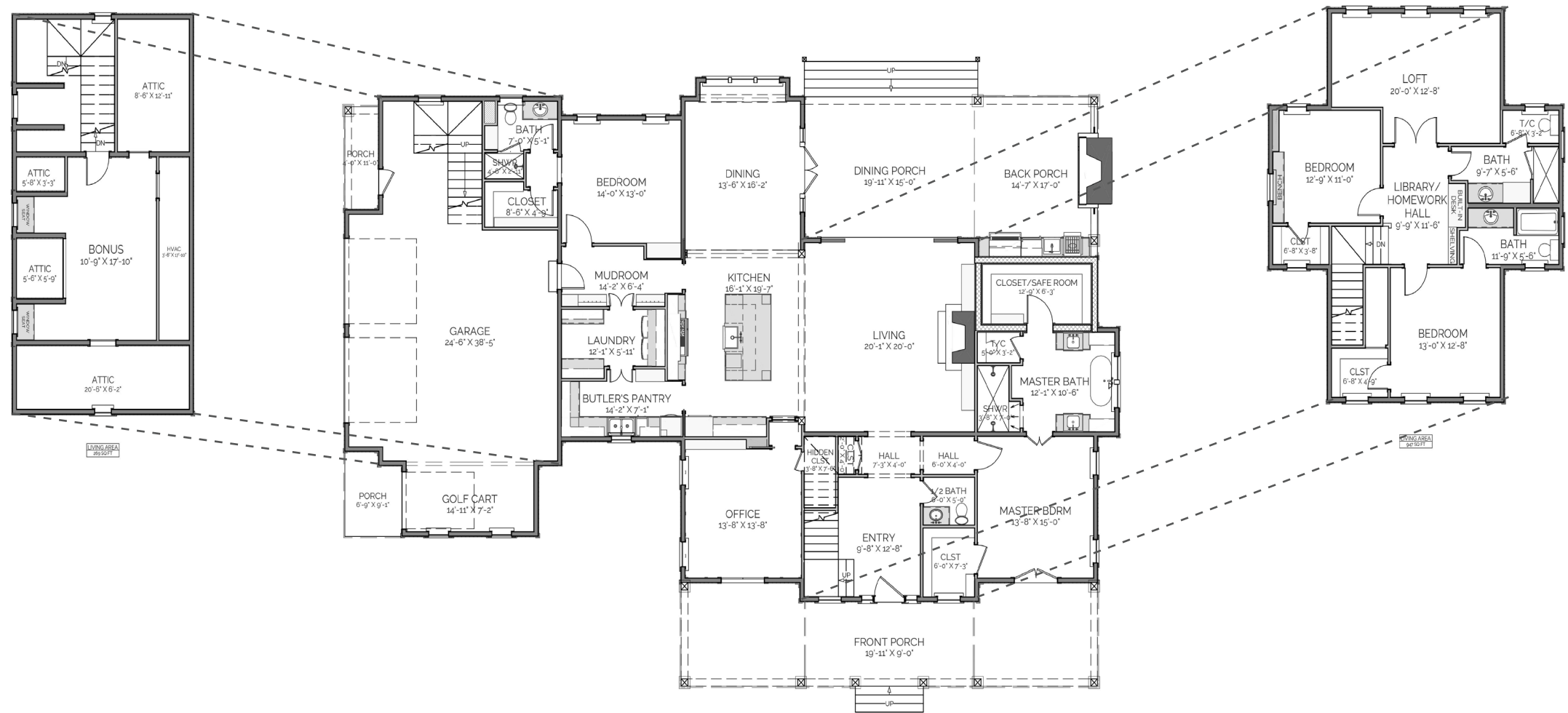
- FIRST FLOOR CONDITIONED
2,631 SQ FT
- SECOND FLOOR CONDITIONED
1,216 SQ FT
- TOTAL CONDITIONED
3,847 SQ FT
- FIRST FLOOR UNDER ROOF
4,601 SQ FT
- SECOND FLOOR UNDER ROOF
1,216 SQ FT
- TOTAL UNDER ROOF
5,8170 SQ FT

OVERALL DIMENSIONS

- OVERALL WIDTH
91' - 1"
- OVERALL DEPTH
64' - 6"

HIGHLIGHTS

- 2 STORY ▪ 4 BATH ▪ 4 BEDROOM
- LAUNDRY ▪ BUTLER'S PANTRY
- OPEN CONCEPT ▪ OFFICE
- FIREPLACES ▪ LOFT LIVING ▪ BONUS SPACE
- LARGE PORCH ▪ DINING PORCH



WILLOW POINT
RESIDENCE

THIS IS PROPERTY OF LAKE + LAND STUDIO, LLC. THIS IS NOT A CONSTRUCTION DOCUMENT AND MAY NOT BE USED OR REPRODUCED WITHOUT THE PERMISSION OF LAKE + LAND STUDIO, LLC.

LAKE + LAND STUDIO, LLC
HATTIESBURG, MS
601.336.8114
WWW.LAKEANDLANDSTUDIO.COM
LAKEANDLANDSTUDIO@GMAIL.COM